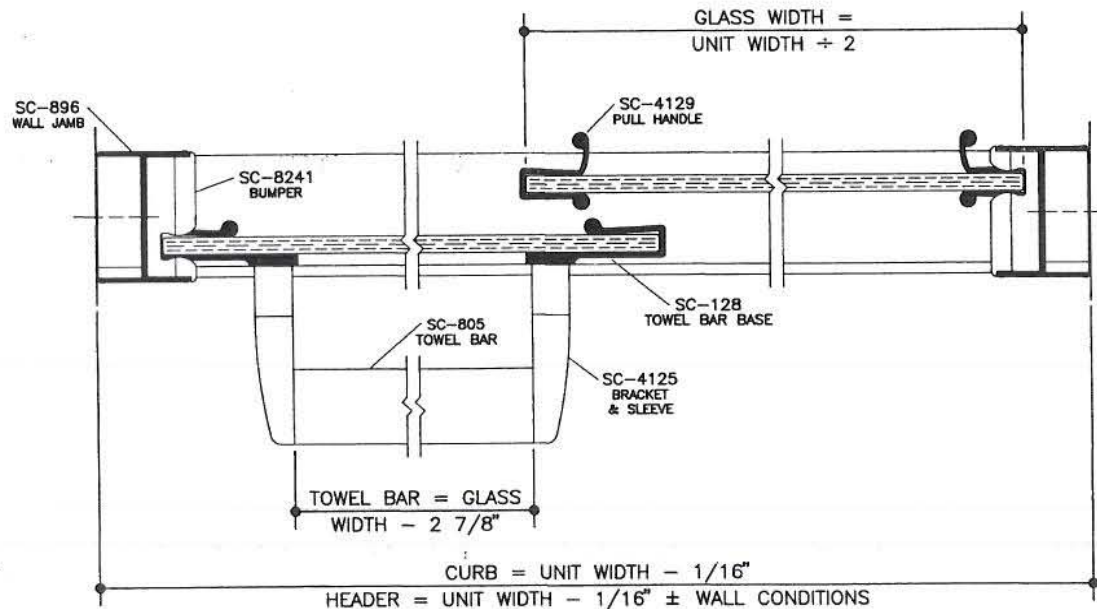
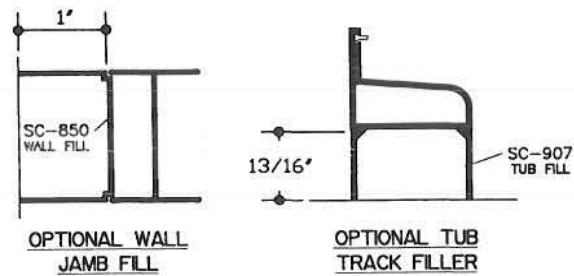


VERTICAL CROSS SECTION



HORIZONTAL CROSS SECTION

1/2 SIZE DETAIL

NOTE: Glazing material for all K/D units and Glazed units must conform to
Ansi Z97.1 and CPSC Standard 16 CFC 1201 Category I and II.

SERIES	MODEL	WIDTH x HEIGHT	DOOR GLASS SIZE
3400	3400	60" x 57"	30" x 54"
3500	3500	48" x 70"	23 1/2" x 67"
FRAMELESS BATH ENCLOSURE	3500	60" x 70"	30" x 67"

BASCO[®]
SHOWER ENCLOSURES

7201 Snider Road ■ Mason, Ohio 45040
Phone (513) 573-1900