



Creating Ideas
For Your Bath

BASCO
SHOWER ENCLOSURES

Commitment

TO QUALITY & SERVICE

When we opened our doors in 1955, we opened up a whole new world of bath possibilities.

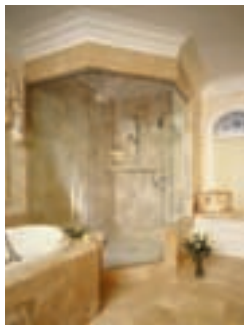
Today, our goal is to manufacture the finest shower enclosures available anywhere. In fact, Basco has consistently been rated number one in quality and brand preference within the industry. And our service is unparalleled.

We're confident that we can meet, even exceed, your standards. Because there are no standards higher than our own.



George W. Rohde
President & Chief Executive Officer

INDEX



WHAT MAKES BASCO BETTER?2-3

LUXURY GLASS ENCLOSURES

Celesta Frameless (LX 900 Series, 2850, 3850)4-7



TUB & SHOWER SLIDING ENCLOSURES

Supreme (2150, 3150)8-9

Infinity 1/4" Frameless (4400, 4500)10-11

Deluxe (6150, 7150)12-13

Frameless (3400, 3500)14-15



SWING DOORS

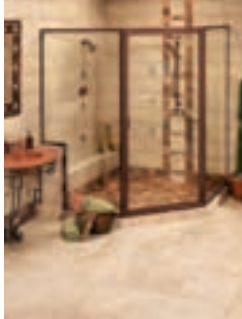
Infinity 1/4" Frameless Continuous Hinge (1400, 1700)16-17

Framed Pivot (100, 200, 500)18-19

Framed Hinge (15, 16)19

Framed Bi-Fold (1100)19

Frameless Pivot (3600)20-21



DOOR & PANEL ENCLOSURES

Thinline Pivot - Custom	22-23
Thinline Pivot - Standard (100, 700 Series)	24-25
Infinity 1/4" Frameless Continuous Hinge (1400, 1700 Series & Custom)	26-27



CURVED GLASS ENCLOSURES

Contours Pivot (660)	28-29
----------------------------	-------



STEAM ENCLOSURES

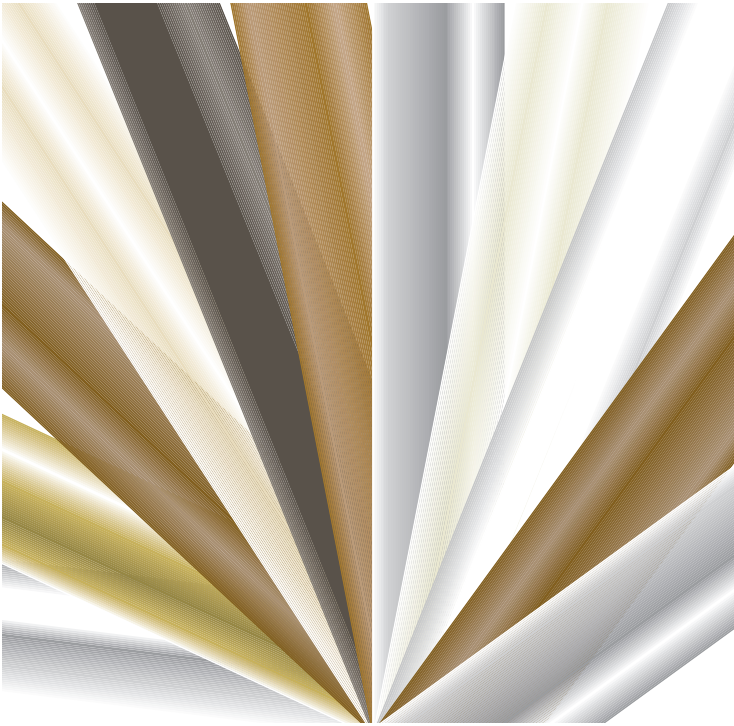
Seal-Tight Thinline Pivot (100, 700 Series)	30
Seal-Tight Sliding (2000, 3000, 3055)	31
Seal-Tight Pivot (18CS)	31



PRODUCT INFORMATION

Frame Finishes	32-33
Glass Options	34-35
Product Care	36
Specifications	37

THE BEST SHOWER FOR YOUR BATH



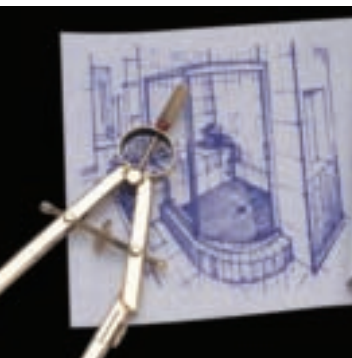
VARIETY OF FRAME COLOURS Designed to complement today's most popular faucet and bath hardware, Basco's palette of painted and metallic finishes allows you to create a perfectly coordinated bath environment.



PREMIUM GLASS OPTIONS Basco offers the industry's largest variety of luxurious glass options. Safety-tempered glass, used in all our enclosures, is five times stronger than ordinary glass.



Our commitment to excellence allows us to back our products with a lifetime warranty.



CUSTOM DESIGNS More than 50 years of experience makes Basco the leader in custom enclosures. Basco can fit any style and size you need. And because of our expertise, orders are shipped in days, not weeks.

DOOR

HARDENED ALUMINUM FRAMES Extruded and hardened with an exclusive heat treatment for lasting beauty. This process prevents bending and preserves the surface from unsightly scratches.



QUALITY ENGINEERING Basco fabricates each shower door with precision accuracy and premium materials to ensure maximum performance and lasting durability. That's why we're consistently rated number one in quality and brand preference within the industry.



ADVANCED BASCOAT™ FINISH Basco's own finishing system protects your shower door's lustre and shine. For all Colours products, durable polyester resin is baked on the surface to create an impenetrable moisture shield.



EASY-TO-CLEAN Basco makes cleaning a breeze. An exclusive Sta-Kleen™ track on all sliding doors prevents dirt from accumulating. For swing doors, innovative drip systems keep water in the shower and off the floor.



Celesta™

luxury glass enclosures

A bathroom featuring a total shower environment from Celesta is today's ultimate in design, distinction and elegance. From the exceptional beauty and brilliance of our precision cut glass to the smooth, artistic refinement of our custom hardware, Celesta Luxury Glass Enclosures by Basco exquisitely indulge any and every desire. Transforming even the most fantastic dream into a spectacular reality.



1/2" Celesta Luxury Enclosure - Prima Hinges

Hardware Options

Basco's hinges, pulls and towel bars are available in elegant finishes to perfectly complement your bathroom décor.

- Chrome (CH)*
- Silver (no code)**
- Brass (PB)*
- Brushed Nickel (BN)
- Brushed Satin Chrome (BS)*
- Gold Plated (GP)*
- Gold (GD)**
- Satin Brass (SB)*
- Satin Chrome (SC)*
- Antique Brass (AB)*
- Almond (AP)
- Antique Pewter (QP)
- Bronze (BR)
- Burnished Copper (CU)
- Cream (CM)
- Linen White (NN)
- Oil Rubbed Bronze (OR)
- Platinum (PL)
- Polished Nickel (PN)
- Satin Nickel (SN)
- White (WP)
- Wrought Iron (WI)

*Available only in Celesta swing units.

**Available only in Celesta sliding units.

See next page for glass options

DOUBLE-SIDED DOOR PULL SETS Our brass pulls are available in traditional or circular styles and add a luxurious look to your shower. Basco's smooth and twist style clear acrylic pulls complete the all-glass appearance.



TRADITIONAL



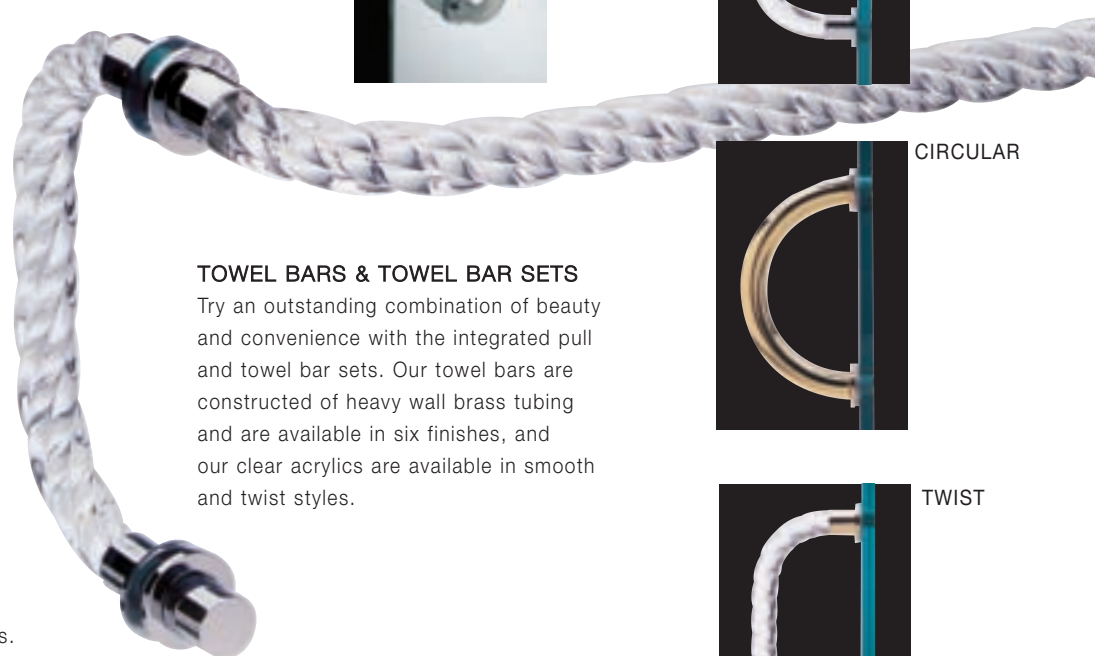
SMOOTH



CIRCULAR



TWIST



TOWEL BARS & TOWEL BAR SETS

Try an outstanding combination of beauty and convenience with the integrated pull and towel bar sets. Our towel bars are constructed of heavy wall brass tubing and are available in six finishes, and our clear acrylics are available in smooth and twist styles.



Celesta 2850VNB - Venetian Glass, Brushed Nickel Frame

Glass Options



Arctic Frost



Clear



Cobblestone



Rain



Symmetry



Venetian

Towel Bars



POCKETED WALL JAMBS
Celesta's pocketed wall jambs prevent leakage and hold the panels in place.



TRACK Celesta's innovative track with three guides keeps panels securely in place.



ALUMINUM TOWEL BARS
Interior and Exterior aluminum towel bars are standard in a variety of finishes.



Supreme 2150 Cascade Glass, Silver Frame

Supreme

TUB & SHOWER
SLIDING ENCLOSURES
2150, 3150

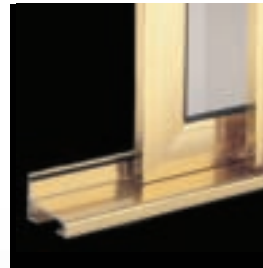
A departure from standard framed models, Supreme has a completely rounded design that conveys a distinctive look like never before. Clear pull handles, bumpers and guides add a touch of elegance that further define Supreme as the centerpiece of today's modern bath.



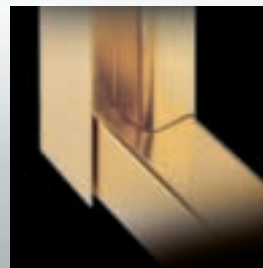
Supreme 3150CLCU - Clear Glass, Burnished Copper Frame

TOWEL BARS Supreme's rounded towel bars provide a smooth, polished look and feeling of elegance, complementing the unit's curved design.

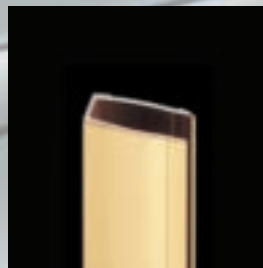
Available through the rail (standard) or through the glass shown here (optional).



TRACK A step beyond Basco's original, this Sta-Kleen track keeps dirt from accumulating and has a lower profile for a streamlined appearance.



POCKETED WALL JAMBS A Supreme exclusive, the S-shaped wall jamb design prevents leakage and holds the panels in place.



CURVED RAILS Supreme's door frame is curved rather than flat to complement the towel bar and header.



DESIGNER HEADER A rounded header further distinguishes Supreme from other enclosures in the industry.



Basco's Customer Service Department delivers fast, **ACCURATE ANSWERS** to all your questions.



Infinity T4500RNB - Rain Glass, Brushed Nickel Frame

Infinity

1/4" FRAMELESS TUB & SHOWER
SLIDING ENCLOSURES
4400, 4500

The finest in frameless, Infinity is marked by a curved design that reflects today's unencumbered bath styles. The 1/4" glass with polished edges sets Infinity apart not just in terms of design, but in performance as well.



Infinity 4500CDNN - Clear Beveled Glass, Linen White Frame Pull handles replace towel bars on beveled units.

HEADER The header is rounded to accentuate Infinity's open, unrestricted design.



TRACK Basco's renowned Sta-Kleen track is virtually self-cleaning because there is no dirt buildup as in conventional tracks.



Curved towel bars appear to be suspended on the glass creating a more spacious, elegant look.



Optional arched towel bars further enhance the fluid elegant look of the Infinity unit.



Our shipping department ensures **QUICK DELIVERY** and expert handling of enclosures.



Deluxe 7150 Clear Glass, Oil Rubbed Bronze Frame

Deluxe

TUB & SHOWER
SLIDING ENCLOSURES
6150, 7150

Basco's most popular enclosure, Deluxe possesses proven quality in design and performance. Unlike other enclosures in its class, Deluxe has polished anodized metal made in a heavier gauge, as well as two towel bars instead of one.



Deluxe 6150 - Obscure Glass, Silver Frame



TOWEL BARS Distinctive towel bars on the interior and the exterior of the door provide added convenience.

BY-PASS STOP This feature keeps the inside panel on the same side as the shower head to prevent leakage.



SAFETY T-LOCK Because it is integrated in the wall jamb, the T-lock secures the header to hold the panels in place.



ADJUSTABLE ROLLER The roller assembly is slotted so that out-of-square wall conditions can be adjusted up to 3/8".



Basco makes enclosures to fit all sizes of FIBERGLASS & ACRYLIC modulares for over 35 tub and shower manufacturers.



TRACK The Sta-Kleen track's gentle slope and rounded front keep water in the shower and off the floor.



Frameless 3400 Clear Glass, Oil Rubbed Bronze Frame

Frameless

TUB & SHOWER
SLIDING ENCLOSURES
3400, 3500

Clean, spacious design is what makes Frameless unique. It's free from excess metal, free from unsightly overlapping panels, creating an open, more spacious bath environment.

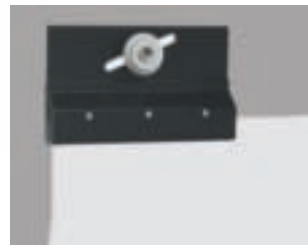


Frameless 3500CLWI - Clear Glass,
Wrought Iron Frame

TRACK & GUIDE SYSTEM The Sta-Kleen track prevents dirt from accumulating and the guide system keeps the panels in place for smooth operation.



BUMPER To better protect the glass, two bumpers on each wall jamb ensure that there is no glass-to-metal contact.



FRAMELESS ROLLER ASSEMBLY The factory-installed roller assembly keeps the door in place and provides for easy out-of-square adjustment.



TOWEL BAR The towel bar has acrylic brackets and matching aluminum sleeves for a more streamlined appearance. (A second towel bar is available as an option.)



Orders can be filled quickly because Basco has a **COMPLETE INVENTORY** of enclosures in stock and readily available.



Infinity 1700 Clear Glass, Oil Rubbed Bronze Frame

Infinity

1/4" FRAMELESS CONTINUOUS HINGE
SWING DOORS
1400, 1700

From top to bottom, Infinity's frameless design and innovative hinge system use less metal framing, creating a vision of seamless beauty and sheer elegance. Luxurious 1/4" glass with polished edges not only enhances Infinity's rich appearance, but also adds stability and maximizes performance.



PULL & TOWEL BAR SET The perfect combination of beauty and convenience is created by integrating the pull and towel bar into one streamlined element. Available in a variety of styles and finishes.



CLEAR DRIP SYSTEM
Located at the bottom of the door, the clear vinyl seal keeps water in while maintaining the all-glass look. An innovative channel returns water to the inside of the shower.



FULLY INTEGRATED HINGE SYSTEM
Refined to reveal more glass and less metal, the singular hinge secures glass from top to bottom for maximum stability and quiet operation.



Explore a world of choices.
Preview the latest designs.
Visit BASCOSHOWERDOOR.COM



Framed Pivot 100CDGD - Clear Beveled Glass, Gold Frame

Framed

SWING DOORS

100, 200, 500, 15, 16, 1100

Basco proves once again that there's more than one way to achieve elegance in bath décor. In fact, there are three ways: Pivot, Hinged and Bi-Fold Framed Swing Doors. Sizes are available up to 36" wide and all are reversible for right or left swing. While each has its own distinctive look, collectively they're a fine example of Basco's ingenuity.

PIVOT SHOWER DOORS



Framed Pivot T100CLGD with Optional Towel Bar
- Clear Glass, Gold Frame



MAGNETIC LATCH
Holds the door securely in place to keep water from escaping.

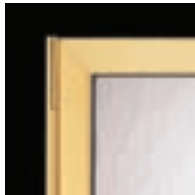


PIVOT JAMB Ensures smooth door operation and makes out-of-square adjustment easy.



DRIP SYSTEM At the bottom of the door, a channel returns water back inside the shower.

BI-FOLD SHOWER DOORS



INTRA-HINGE This full-length aluminum hinge provides stability for years of trouble-free operation.



CENTER HANDLE WITH MAGNETIC CLOSURE
Provides for a watertight seal while making the door easy to open from the inside.



Intra-Hinge Bi-Fold 1100GD - Obscure Glass, Gold Frame

HINGED SHOWER DOORS



Hinge 15 - Obscure Glass, Silver Frame



ADJUSTABLE BULLET CATCH
Spring-loaded feature ensures that the door remains securely latched.



WATER DEFLECTOR
Applied with self-adhesive tape, the water deflector keeps water inside the shower.

Basco leads the industry with **INNOVATIVE DESIGNS** that are truly superior in terms of aesthetics and performance.




Frameless Pivot 3600MYNN - Symmetry Glass, Linen White Frame

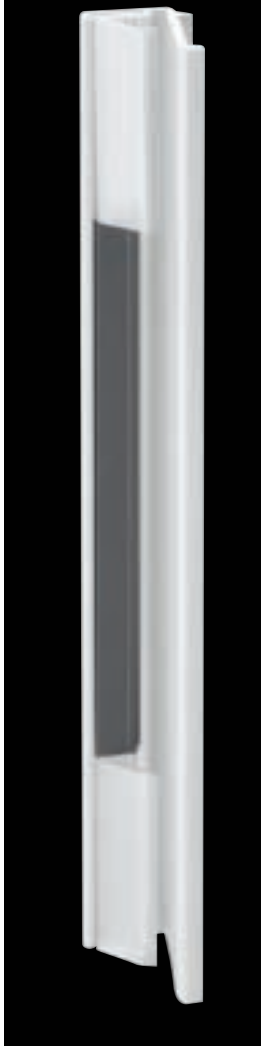
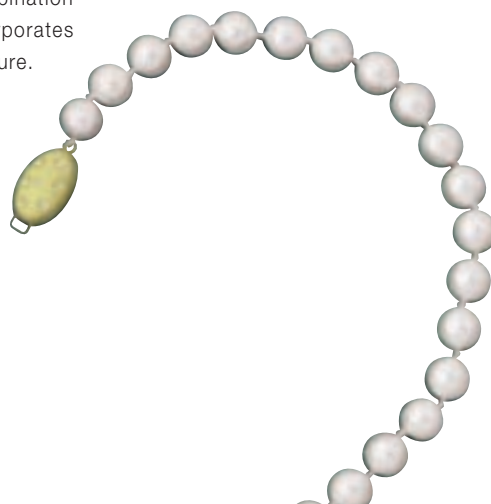
Frameless

PIVOT SWING DOOR
3600

Innovative engineering and spacious design make Frameless Pivot the perfect complement to sophisticated bath décors. The need for total metal framing has been eliminated, resulting in an enclosure that's visually unrestricted by lines and open to the imagination.



MAGNETIC HANDLE The perfect combination of form and function, this feature incorporates a magnetic latch to keep the door secure.



CLEAR VINYL SEAL To eliminate leakage, a clear gasket is located on the strike jamb and behind the pivot jamb.



PIVOT JAMB A streamlined version of Basco's original pivot system, this jamb ensures secure door operation and makes out-of-square adjustment easy.



Custom 760CLCU Neo-Angle with Notched Buttress Panel - Clear Glass, Burnished Copper Frame

Thinline

CUSTOM DOOR & PANEL
SHOWER ENCLOSURES

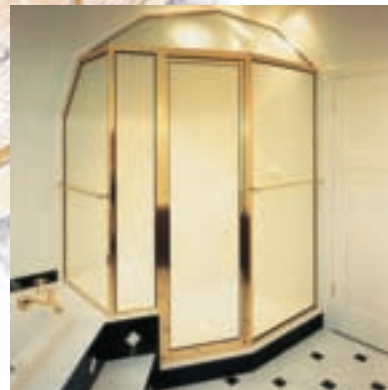
Available with a framed or frameless door, Basco's custom Door & Panel enclosures can be designed in any height, width and configuration to fit your exact opening dimensions. Then select from a spectrum of exciting frame colours and glass options. Also available with Quick 'N Stall option for installation which is twice as fast. Orders are shipped in days, not weeks.



Custom 750CLGD Additional Panel on Double Buttress - Clear Glass, Gold Frame



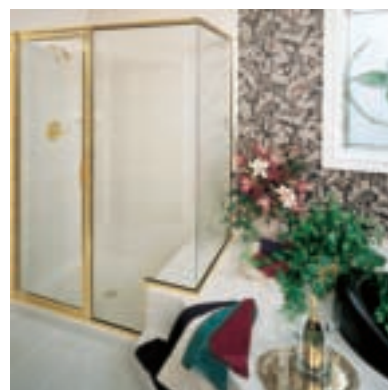
We can take any idea, no matter how complex, and turn it into the shower of your dreams.



STEAM On Buttress with Angled Transom Panels



Many of our enclosures can be fabricated to accommodate people with special needs.



SHOWER STALL
Glass-To-Glass
Corner and Notched
Buttress Panel



It is our time-honored tradition to fabricate each Custom Enclosure individually to ensure **PERFECTION**.



Thinline Pivot 735 Clear Glass Brushed Bronze Frame

Thinline

STANDARD DOOR & PANEL SHOWER ENCLOSURES 100, 700 SERIES

Five styles. All crafted in Basco's innovative Thinline design which emphasizes more glass and less metal for a more spacious appearance. The Door & Panel combination makes it possible to create glass walls for a variety of configurations. All are available with a framed or frameless door.



Neo-Angle 160CLWI - Clear Glass, Wrought Iron Frame



NEW & IMPROVED QUICK 'N STALL
Installation is twice as fast using this innovative product option. Featuring a new and improved notched design, drainage is now better than ever.



BASCO'S THINLINE



COMPETITOR'S FRAMING



DRIP SYSTEM

This design feature incorporates a channel that returns water back inside the shower.



SPLASH GUARD PIVOT RAIL

Supported with a pin assembly instead of hinges, this feature ensures stable door operation and helps prevent leakage.



Panel-Door-Panel
125/725



Door-Panel
135/735



Door-90° Angle
145/745



Door-Panel-90° Angle
150/750



Neo-Angle
160/760

Door panels are available in framed or frameless. Standard unit heights are 68 1/2" or 72". An additional standard height of 65 3/4" is available for 125/725 and 135/735 units.

Custom heights available.



Infinity 1722 CLOR - Clear Glass, Oil Rubbed Bronze Frame

Infinity

1/4" FRAMELESS CONTINUOUS HINGE
DOOR & PANEL SHOWER ENCLOSURES
1400, 1700 SERIES & CUSTOM

Enveloped by luxurious 1/4" glass, the frameless door features a continuous hinge system for added stability, durability and quiet operation. Infinity Door & Panel Enclosures are a popular choice among those with an eye for the extraordinary. The Door & Panel combination offers the flexibility to create glass walls in a variety of sizes and configurations. The streamlined design makes it possible to maintain an open, airy bath environment.



Infinity 1413CLBN Clear Glass, Brushed Nickel Frame



CLEAR DRIP SYSTEM Located at the bottom of the door, the clear vinyl seal keeps water in while maintaining the all-glass look. An innovative channel returns water to the inside of the shower, helping keep the floor dry.



Panel-Door-Panel 1412/1712



MAGNETIC LATCH The through-the-glass-handle completes Infinity's luxurious appearance.



Door-Panel 1413/1713



Door-90° Angle 1414/1714



Door-Panel-90° Angle 1415/1715



Neo-Angle 1416/1716



I STATUS

A fast, convenient way to check the status of your order and confirm delivery.

VISIT BASCOSHOWERDOOR.COM



Contours 660CLGD - Clear Glass, Gold Frame with 600AP - Almond Acrylic Base

Contours

CURVED GLASS SHOWER ENCLOSURES 660

Bath designs reached a turning point when Basco introduced Contours, the original curved glass enclosure. Contours reflects sophisticated Eurodesign. Whether for standard or custom applications, the tempered glass door is arced a full 90°, creating a larger and more spacious shower area than standard corner enclosures. Curved bases are available in a variety of colours to complement Contours' anodized and Bascoat™ finishes.

660 FEATURES Full-length magnet holds the door in place to prevent leakage. Pivot pin assembly ensures smooth door operation. Door is reversible for right or left swing. For custom applications, templates are available.



Custom 660CLGD Contours - Clear Glass, Gold Frame



Custom 725CLWP Panel-Door-Panel Adapted for Steam - Clear Glass, White Frame

Seal-tight Steam

SWING DOORS &
SLIDING ENCLOSURES
18S, 2000, 3000, 3055

Regardless of whether a sliding or a swing enclosure is preferred, Seal-Tight is the perfect choice. With Basco's unique gasket system, the steam stays inside the enclosure, creating a private world of relaxation. In short, the steam can't escape, but you can.



Deluxe Steam 3000 - Obscure Glass, Silver Frame



Custom 18SCLPL Steam Pivot with Stationary Top Panel - Clear Glass, Platinum Frame

OPTIONAL TOP PANEL

When the opening is taller than 80" an optional stationary or hinged top panel is recommended.



STEAM SEAL This gasket is designed so that steam on sliding enclosures is contained within the shower.



POCKETED WALL JAMB

This feature holds sliding doors securely in place to keep steam inside the shower.



MAGNETIC LATCH

This feature holds swing doors securely in place to prevent water and steam from escaping.



VINYL DOOR SEAL

The seal, located at the top of the door, helps keep steam inside the unit.

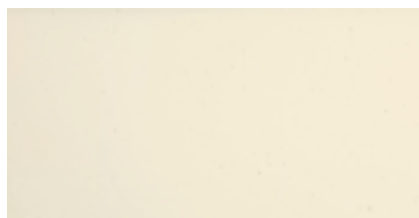


Computer-generated labeling and individual inspection of each unit ensure **ORDER ACCURACY.**

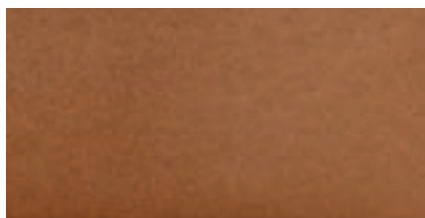


Frame Finishes

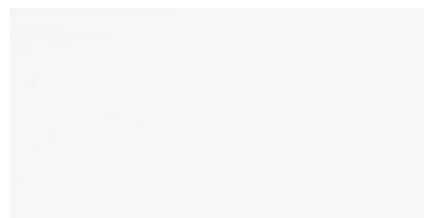
WITH EXCLUSIVE
BASCOAT™ COLOURS:



Almond (AP)



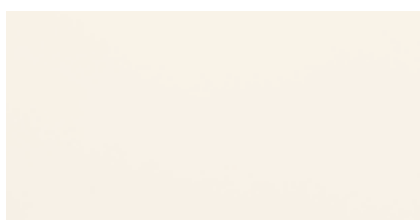
Burnished Copper (CU)



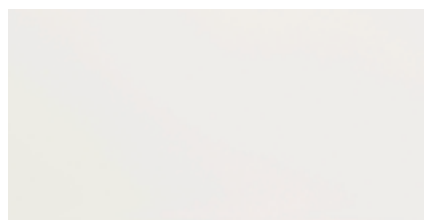
White (WP)



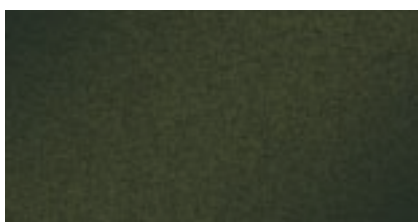
Platinum (PL)



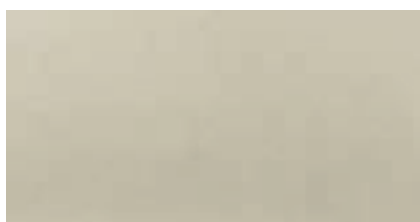
Cream (CM)



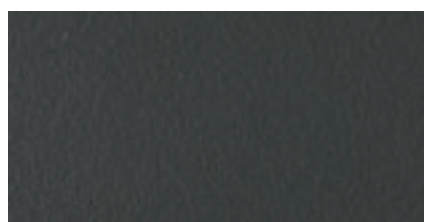
Linen White (NN)



Antique Pewter (QP)



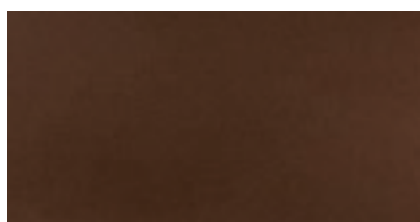
Satin Nickel (SN)



Wrought Iron (WI)



Bronze (BR)



Oil Rubbed Bronze (OR)



Brushed Bronze (BB)

ANODIZED FINISHES



Silver (No Code)



Gold (GD)



Brushed Nickel (BN)

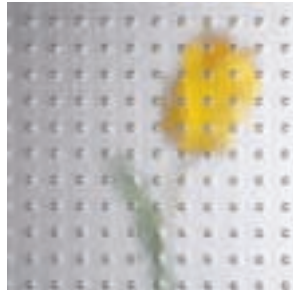


Glass Options

Twelve styles that individually add a definitive touch of sophistication to any enclosure. Clear, patterned, reflective, beveled...Basco offers the industry's largest variety of luxurious glass options ranging in opacity for the degree of privacy desired. Safety-tempered glass, used in all our enclosures, is five times stronger than ordinary glass.



Obscure (No Code)



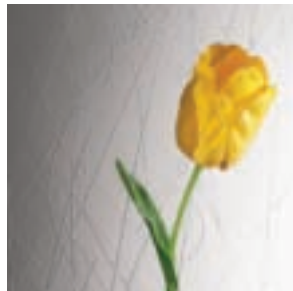
Symmetry (MY)



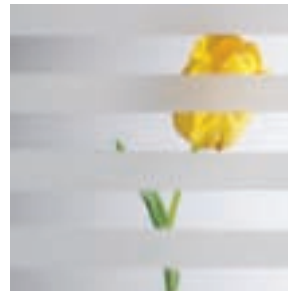
Clear (CL)



Fluted (FG)



Heirloom (HM)



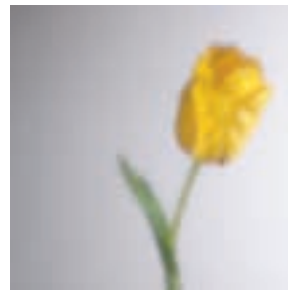
Clear Etched (EE)



Cascade (CA)



Rain (RN)



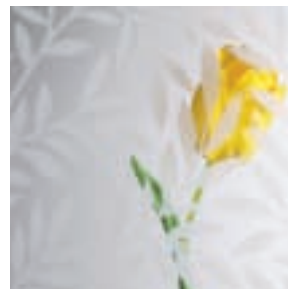
Steam Mist (MT)



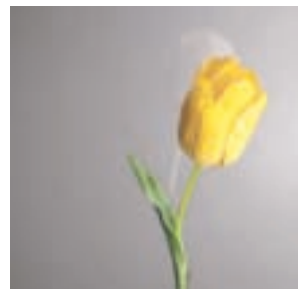
Clear Beveled (CD)



Autumn (AU)



Laurel (LA)



Reflections (RF)

Product Care

Your complete satisfaction is our first priority. To keep your enclosure looking its best year after year, Basco recommends two outstanding cleaning products.



Introducing Basco's shower door glass protection

Cleaning your new shower enclosure should be simple. Make it easy with AquaGlide™ glass protection. AquaGlide™ is a protective coating that shields your glass against soap scum, spotting and mineral deposits.

Have Basco apply AquaGlide™ at the factory or purchase an AquaGlide™ kit to apply it to existing shower glass.

To learn more, visit basco showerdoor.com/aquaglide.

Specifications

Materials and Construction:

- A. Extruded aluminum shall be 6463- T5 alloy.
- B. All exposed screws or fasteners shall be stainless steel to prevent rust and corrosion
Finish shall conform to Aluminum Association Specifications:
 - a. AA-M21-C31-A21 for buffed clear bright anodized aluminum (Silver).
 - b. AA-M21-C31-A23 for buffed color bright anodized aluminum (Gold).
 - c. AA-M35-C31-A21 for brushed colored bright anodized aluminum (Brushed Nickel).
 - d. All other colors are Powder Coated.

Glazing Materials:

Bath & Shower Enclosures

All glazing materials to be safety tempered glass or other safety glazing materials to conform to CPSC standard 16 CFC 120 I

Category I and II.

Individual Unit Features:

A. Models 2150,3150

1. Adjustable, sealed, heavy duty ball bearing rollers.
2. Safety T-lock wall jamb to header connection.
3. Pocketed wall jambs for superior leak prevention.
4. Tub track attached with double-stick tape or caulk.
5. Transparent molded panel guide for inconspicuous control of sliding panels.
6. Molded jamb bumpers with concealed fasteners.
7. (Optional) Vinyl anti-jump header insert
8. Polished metal towel bars with clear polypropionate anti-reverse finger pulls. Towel bars are not to be used as grab bars.
9. Reversible round header design.

B. Models 6150,7150

1. Adjustable sealed ball bearing rollers.
2. Safety T-lock jamb to header connection.
3. Easy clean, self-draining tub track.
4. Molded jamb bumpers with concealed fasteners.
5. Nylon panel guide to be of sufficient height to prevent accidental dislodging of interior panel.
6. (Optional) Vinyl anti-jump insert to be installed in header:
7. Polished metal towel bars with clear acrylic anti-reverse finger pulls. Towel bars are not to be used as grab bars.

C. Models 3400, 3500, 4400, 4500

1. Adjustable sealed ball bearing rollers.
2. Safety T-lock jamb to header connection.
3. Easy clean, self-draining tub track.
4. Molded jamb bumpers with concealed fasteners.
5. Nylon panel guide to be of sufficient height to prevent accidental dislodging of interior panel.
6. Polished metal towel bar(s). Towel bar(s) are not to be used as grab bars (3400, 3500 have single bar).

D. Models 2850, 3850

1. Adjustable, sealed, heavy duty ball bearing rollers
2. Safety T-lock wall jamb to header connection.
3. Pocketed wall jambs for superior leak prevention.
4. Tub track attached with double-stick tape or caulk.
5. Transparent molded panel guides for inconspicuous control of sliding panels.
6. Clear molded peel-and-stick jamb bumpers.
7. Architectural grade aluminum towel bars with machined aluminum fastening system finished to match unit. Towel bars are not to be used as grab bars.
8. Reversible round header design.

E. Models 3600, 100, 200

1. All pivot plates shall be extruded aluminum, finished to match unit.
2. Pivot jambs shall have vertical vinyl seal.
3. All doors shall have continuous drip rail and seal at bottom of door: Drip rail to be attached with two sided tape with no expose screws.
4. Pivot doors to have 1 1/2" lateral adjustment, 3/4" plus and 3/4" minus.
5. Pull handle on Model 3600 shall be extruded aluminum with magnetic latch and vinyl seal.
6. Pull handles on Model 100 to be extruded and finished to match unit. Latch to be full length magnetic strips in strike rail and strike jamb.

F. Models 15, 16

1. All doors shall have a continuous extruded knuckle-and-pin hinge that is integral to the hinge rail and jamb in a finish to match the unit,
2. All doors shall have continuous water deflector and vinyl seal at bottom of door:
3. All doors shall have handles and adjustable catch in a finish to match the unit
4. 15. 16 Series doors have a adjustable jamb to provide 3/8" adjustment
5. Finish shall conform to Aluminum Association Specifications.

G. Thinline Models 126, 726, 136, 736, 146, 746, 151, 751, 161, 761

1. Pivot jamb to have continuous vinyl seal.
2. Pull handles to be extruded aluminum with magnetic latch, finished to match unit

Thinline Models 125, 725, 135, 735, 145, 745, 150, 750, 160, 760

1. Pivot jamb to have continuous vinyl seal. Strike jamb and strike rail to have continuous magnetic strip.
2. Pull handles to be extruded aluminum to match unit with magnetic latch and vinyl seal.

All Thinline Models

1. All doors to have continuous drip rail and vinyl seal at bottom of door: Drip rail to be attached with two sided tape with no exposed screws.
2. Top pivot pin to have. safety washer to prevent accidental dislodging of the door:

H. Units 1400, 1700

1. Continuous extruded ball-and-socket hinge that is integral to the hinge rail and jamb.
2. Hinge assemblies have a molded bushing at the top and bottom of the door panel.
3. Vinyl blade at the bottom of the door panel.
4. Adjustable for precise fit-to-wall conditions. Optional side fillers available for extreme out-of-plumb conditions.
5. Total unit width adjustments is +/- 5/8"
6. Latch consists of permanently mounted magnetic strips.
7. Side panels (1412 & 1413), return panels (1414 & 1415), neo-angle units (1416) and custom configurations available with Basco Thinline applications (see separate Thinline specifications).
8. Detailed instruction sheets and cross sections with custom unit fabrication formulas.

AFFILIATIONS Basco is a member of the industry's finest organizations.





BASCO
SHOWER ENCLOSURES

7201 Snider Road • Mason, Ohio 45040-9601 • Phone (800) 543-1938 • Fax (800) 989-1919 • bascoshowerdoor.com

Copyright: ©1993, 1996, 1998, 2000, 2001, 2002, 2005, 2006 Basco FLC - 04/05 - 55M